

ECO-ULTRA QUIET

PREMIUM ACOUSTICAL UNDERLAYMENT WITH MOISTURE BARRIER

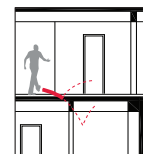
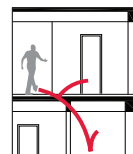
Use with laminate, engineered, bamboo and solid hardwood flooring



**Suitable for use with
radiant heat flooring systems**

Without Eco-Ultra Quiet

With Eco-Ultra Quiet



REDUCE THE NOISE!

STC 73 / IIC 70, Delta IIC 22

IIC and STC results vary based on flooring,
subfloor or ceiling characteristics



New revolutionary **MOISTURE BARRIER FILM** for the best bond strength, durability and moisture protection.



Resists indentation that enables your floors to perform to its fullest potential and last a lifetime.



Heavyweight **HIGH DENSITY** quality underlayment. **Made in the USA.**



GO GREEN! Made with 100% post consumer recycled granulated rubber tires and high-density polyurethane foam using rapidly renewable resources (castor/vegetable oil based polyols).



Up to 6 **LEED** credits for Green Building certification, highest of any underlayment.



Contains an antibacterial / antifungal property that ensures protection from the growth of unwanted microbes.



Industry's best limited **LIFETIME WARRANTY** covers the **Eco-Ultra Quiet** underlayment and use under all brands of laminate and wood flooring.



GreenGuard Gold UL 2818 certified for a better indoor air quality environment

FLOOR & DECOR
TILE • WOOD • STONE

EXCLUSIVELY SOLD
THROUGH FLOOR & DECOR



100 sq. ft. (3 ft. x 33.34 ft.)

Eco-Ultra Quiet

Premium Acoustical Underlayment

With Moisture Vapor Film

INSTALLATION INSTRUCTIONS:

Approved Substrates:

- Dry, completely cured concrete (at least 14 days old with HVAC operating)
- 3/4" interior plywood, OSB flooring, gypcrete (*must be primed before glue down*)
- Waterproofing and crack isolation membranes
- Cement backer boards

Floor Preparation:

- Subfloor should be clean and dry. If installing over concrete, the concrete should not exceed moisture emission rates of 4 lbs. per 1000 square feet per 24 hour period as measured by the anhydrous calcium chloride test.
- Follow the wood manufacturer's installation instructions for additional preparation.

Quick and Easy Installation:

(Requires no additional seaming tape, cuts with a utility knife)

- **Install Eco-Ultra Quiet with film down** against concrete/wood subfloor.
- **For floating and nail down installations**, roll out underlayment with tape strip next to wall. Roll out next row in same manner butting underlayment close to first row (do not overlap) and covering the moisture barrier film. Remove the tape strip and secure the overlapping moisture barrier film.
- **For double glue down installation for wood flooring**, use Bostik MultiGrip or Mapei Ultrabond Eco 980 adhesive (or similar urethane based adhesive with the same bond strength) with a 1/16" trowel on the subfloor.

Trim off the excess overlapping film for glue down installations.

Roll out underlayment with tape strip next to wall. Roll out next row in same manner butting underlayment close to first row (do not overlap). Roll with a 75 - 100 lb. roller to smooth out any air pockets and to secure a good bond to the adhesive.

- Install flooring according to the laminate/wood manufacturer's installation instructions.
- Suitable for use with radiant heat flooring systems.

Foam Products Corporation warrants and guarantees the performance of Eco-Ultra Quiet underlayment under all brands of laminate, engineered, bamboo, and solid hardwood flooring.